

LOWICK PILGRIM INITIATIVE

Linking Lowick to its
medieval past, the creation
of a heritage and
information centre in St
John the Baptist Church



12th Century Grave Stone in St John the Baptist
Church

LOWICK PILGRIM INITIATIVE



- **WHAT?** To tell the story of medieval Lowick bringing an unknown past to life.
- **HOW?** Using Saint John the Baptist Church as an information and heritage centre for pilgrims, visitors, schools and members of the community to tell the story of medieval Lowick and the close connection to the monastery on Holy Island.
- **WHY?:** Lowick has a proud and fascinating history associated with pilgrims and Holy Island, war and pestilence which is largely unknown. This initiative is a way to strengthen and extend the strong sense of community, the sense of belonging of those who live in the village by providing this narrative and sharing this story with those who come here to visit.

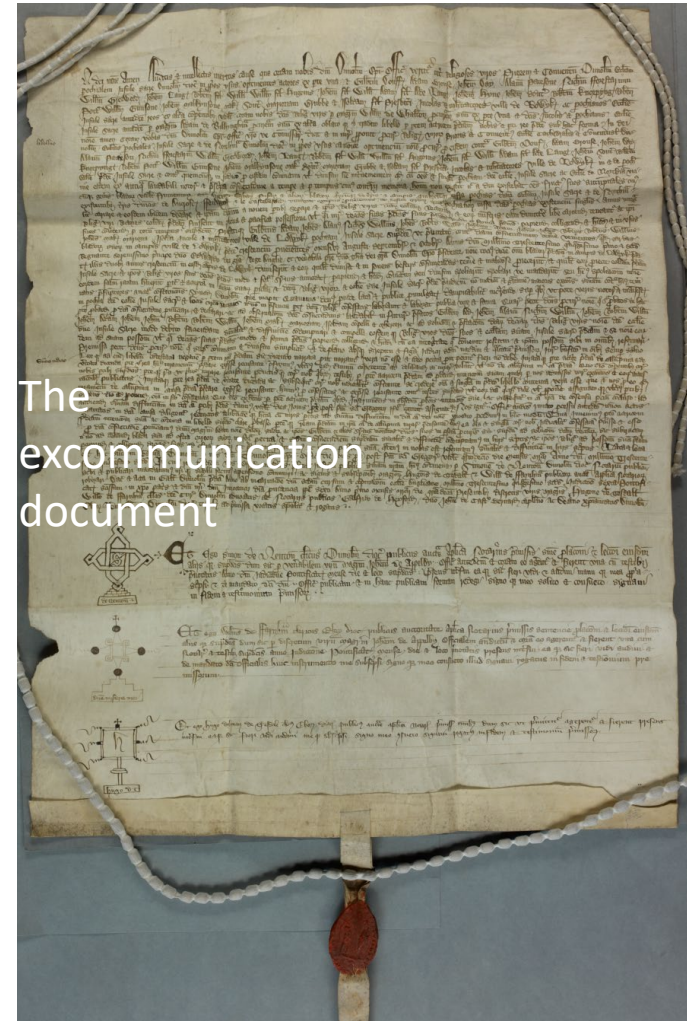
LOWICK PILGRIM INITIATIVE



Historical Facts

- Lowick was one of 4 chapels for Holy Island Monastery.
- Members of the Lowick community were expected to go to Holy Island for services in the priory church every Sunday (when the tide was right).
- Tithes (taxes) had to be paid by Lowick to the monastery in the form of corn and other products.

The excommunication document

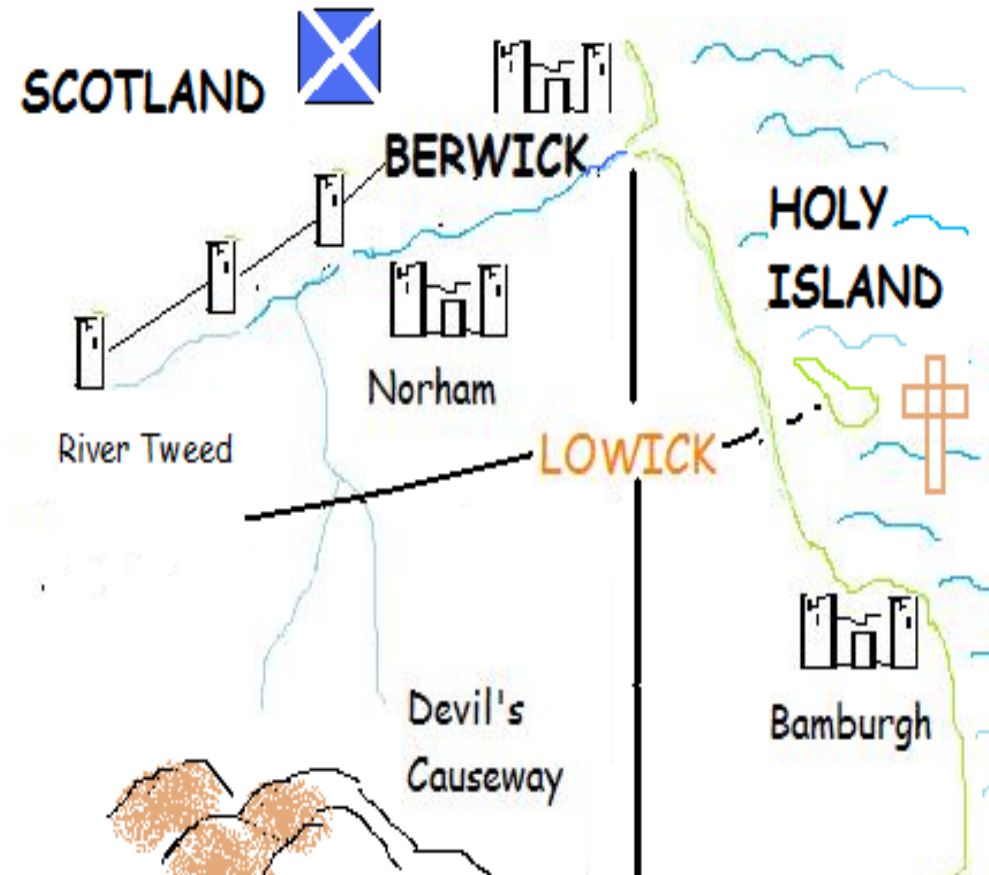


In 1353, 20 members of the Lowick community were excommunicated for not paying the annual tithes including 2 women: Marjorie Grub and Isolde, daughter of the priest.

LOWICK PILGRIM INITIATIVE

PILGRIMS

- Pilgrims were central to the life of Lowick in medieval times, travelling down the Roman, Devil's Causeway from the south or coming from Scotland in the west.
- There was a hostel for pilgrims at Lowick and it is likely here, they could pick up a guide to take them across the dangerous causeway to Holy Island.
- Pilgrims came to worship where St Cuthbert had lived, asking for his help and support and for those unwell, to be cured. This was a major route for pilgrims in northern England.

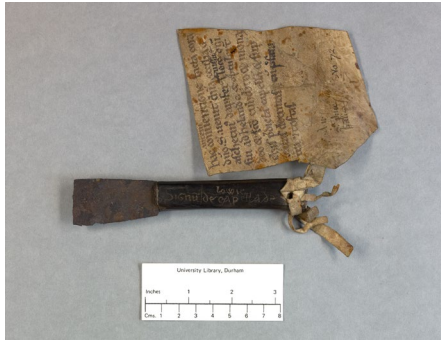


LOWICK PILGRIM INITIATIVE

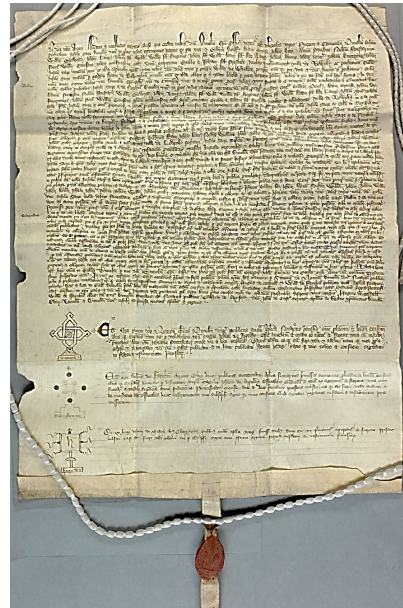
Artefacts from former Lowick Chapel

Lowick is well placed to tell its story. There are artefacts from the original chapel and documents from this medieval past.

documents



12th Century promise to pay tithes with personal knife



Excommunication document, March 1353



Medieval chapel window frame



12th Century grave cover

Rare tympanium (only 5 remain in Northumberland) to ward off evil from above original chapel entrance.



LOWICK PILGRIM INITIATIVE

- Increasing numbers of pilgrims come to Lowick today, walking Saint Cuthbert's Way. They often stay here in the Black Bull, White Swan or the many available accommodations in the village, using the shop to buy provisions. Many come already to visit the church.
- These pilgrims and visitors represent an important economic benefit to the village. Saint Cuthbert's Way does not however officially pass through Lowick and one objective of this initiative is to make Lowick an alternative section of the famous walking route.



LOWICK PILGRIM INITIATIVE



WHAT NEEDS TO BE DONE TO DELIVER THE LOWICK PILGRIM INITIATIVE ?

- Set up a heritage centre at the back of the church with information on Lowick and its pilgrim and later history.
- Provide facilities for visitors to consult this material, considering also, those who come to trace their ancestors,
- And a welcome to all who come to Saint John the Baptist's Church reminding pilgrims (many who come from overseas) that they are following an ancient pilgrim tradition as they visit Lowick and follow in the footsteps of so many earlier pilgrims coming to worship Saint Cuthbert on Holy Island.

As a first step

- **Changing the church door with glass not wood to incorporate better the tower area into the church as a whole, to lighten the nave and provide a view of the fine stained glass window of John the Baptist.**
- **A way also, to make the church more welcoming, the door currently forming a barrier, discouraging visitors to enter.**



Finding the best way and place to provide the narrative and set up the heritage centre, perhaps using the back wall and tower area - the importance of multi-media systems.

LOWICK PILGRIM INITIATIVE ACTION



WOULD YOU BE INTERESTED IN HELPING AND SUPPORTING THIS INITIATIVE?

WE NEED HELP FROM ANYONE LIVING IN LOWICK OR NEARBY TO MAKE THE **LOWICK PILGRIMAGE INITIATIVE** HAPPEN.

SIGN UP TODAY TO JOIN US.

ACTIONS

- FORM A WORKING GROUP MADE UP OF MEMBERS OF THE COMMUNITY
- DRAW UP AN ACTION PLAN
- MEET WITH REVD. SIMON WHITE – who has agreed to help this project and has experience of historical and church projects of this kind.
- Talk to Cuthbert's Way Group to make Lowick an alternative section of the route.
- SEEK POTENTIAL FUNDING FOR WHAT IS LIKELY TO BE A MAJOR PROJECT – heritage lottery, community fund, Historic England

LOWICK PILGRIM INITIATIVE

WOULD YOU BE INTERESTED IN HELPING AND SUPPORTING THIS INITIATIVE?

WE NEED HELP FROM ANYONE LIVING IN LOWICK OR NEARBY TO MAKE THE LOWICK PILGRIMAGE INITIATIVE HAPPEN.

SIGN UP TODAY TO JOIN THE LOWICK PILGRIM INITIATIVE.

I would like to join the Lowick Pilgrim Initiative and to help tell the story of the village

Name:

Contact details:

Any special experience or interests (i.e. fundraising, artistic skills, historic knowledge, research experience,
enthusiasm:

.....

.....

Signed

